

Study: Comparison of Protection against Ocular Contamination with Disposable Eyewear Products

Appendix: *Supplementary observations & photographs*

Shmuel Shoham^{1, 2}, Carlos Acuna-Villaorduna², Margaret Cotton¹, Matthew Hardwick¹
Medstar Health Research Institute¹, Washington Hospital Center²

Study conducted Nov-2009



Test 1:

Bettershield and 3M N95 mask



Test 1:

Bettershield and 3M N95 mask

Mannequin head (BetterShield + 3M N95) sprayed with “glo-germ” type ink, simulating a patient event such as sneeze, cough or spray.

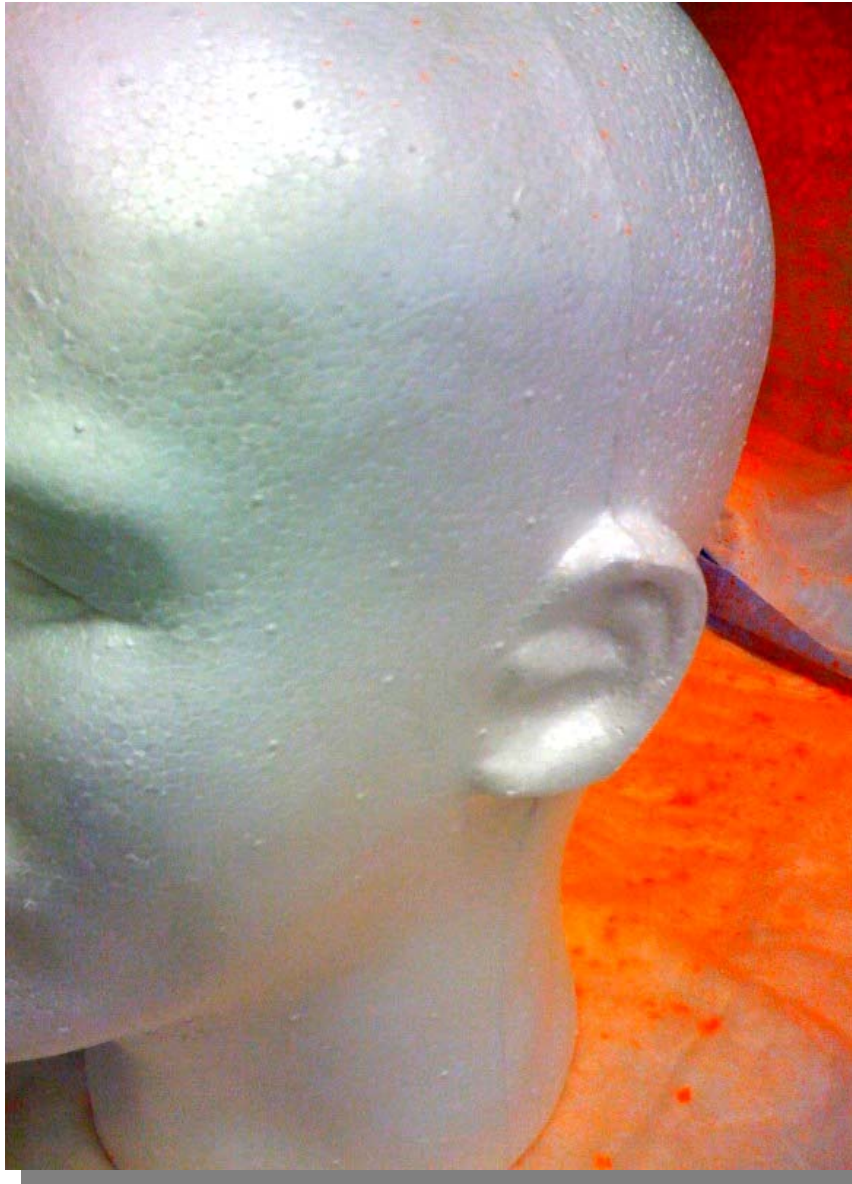


Test 1

Bettershield and 3M N95 mask

Results:

Mask and Shield removed, note the qty of ink visible.



Test 1

Bettershield and 3M N95 mask

Results (cont)



Test 1

Bettershield and 3M N95 mask

Results (cont)



Test 1

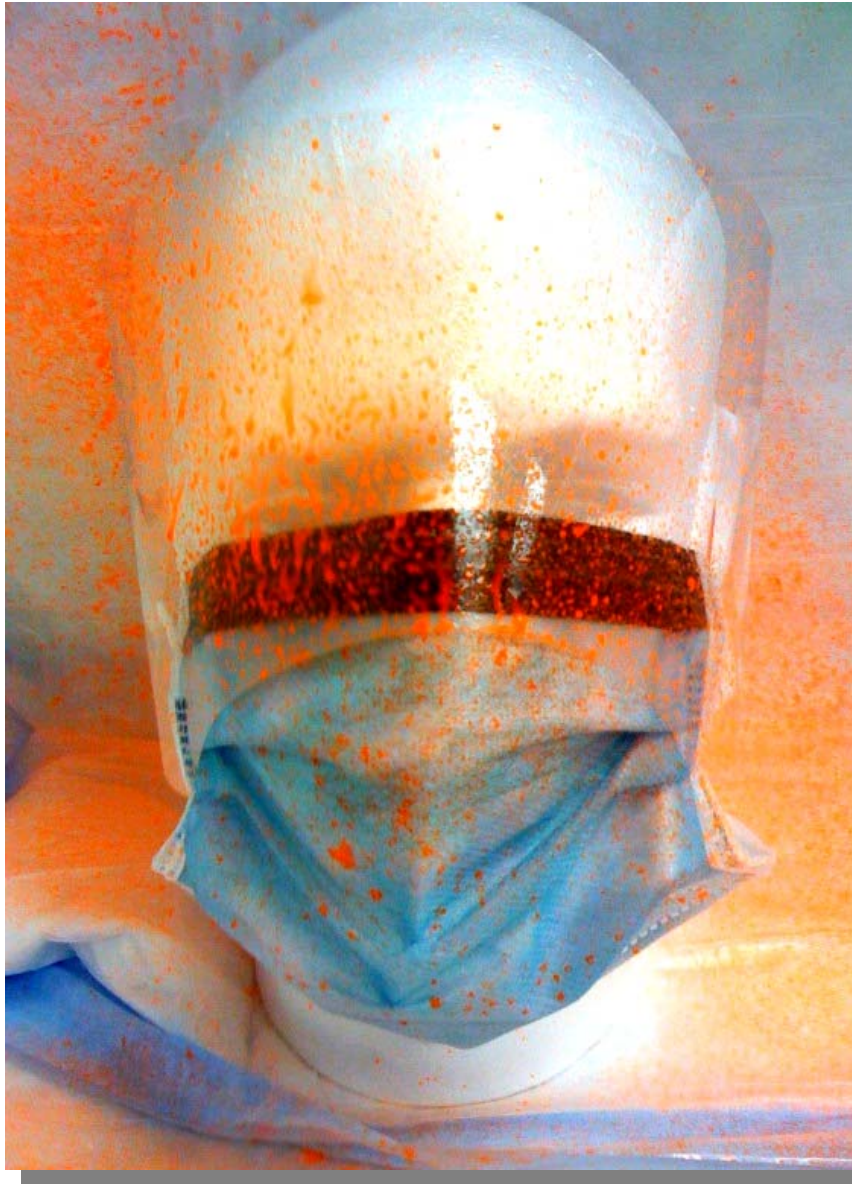
Bettershield and 3M N95 mask

Results (cont)



Test 2:

Integrated visor / surgical mask
(*i.e. non-N95 mask*)



Test 2:

Integrated visor / surgical mask
(i.e. non-N95)

Mannequin head (integrated
mask/visor) sprayed with “glo-
germ” type ink, simulating a
patient event such as sneeze,
cough or spray.



Test 2:

Integrated visor / surgical mask
(i.e. non-N95)

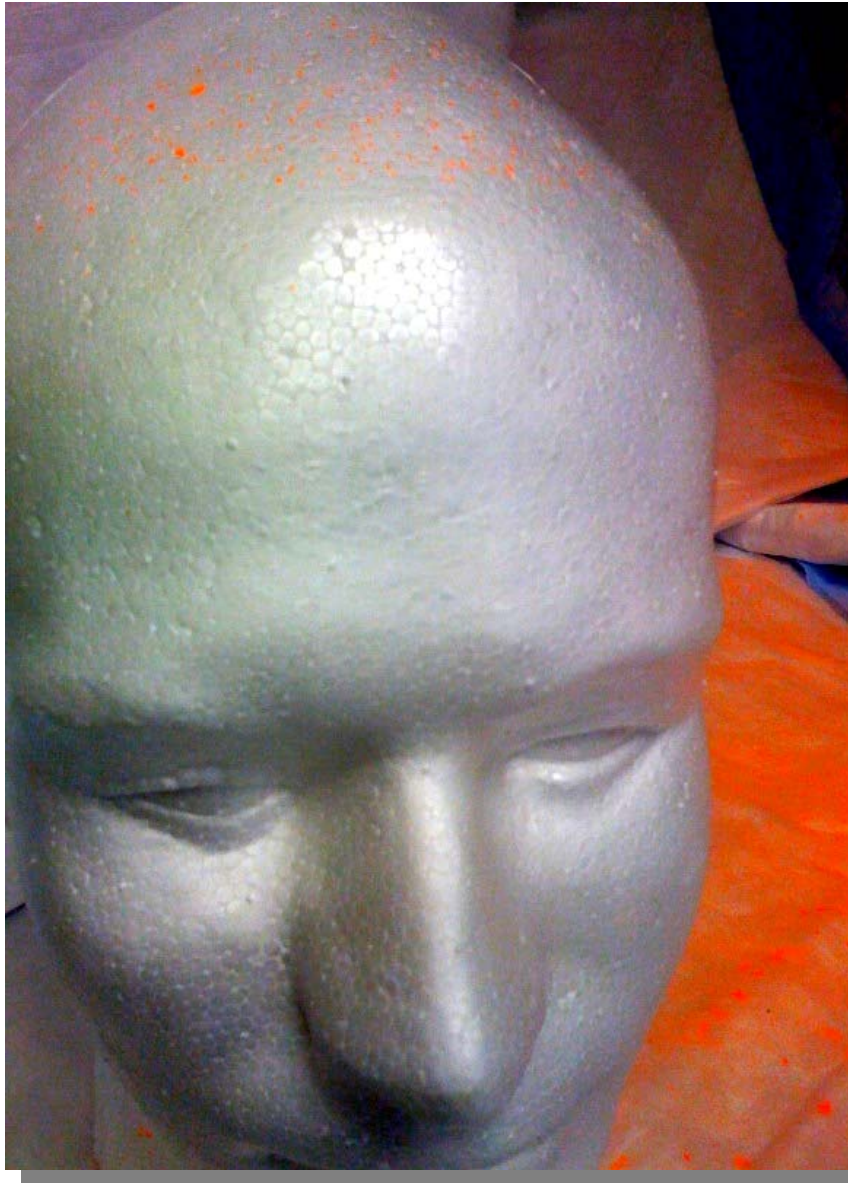
Results



Test 2:

Integrated visor / surgical mask
(i.e. non-N95)

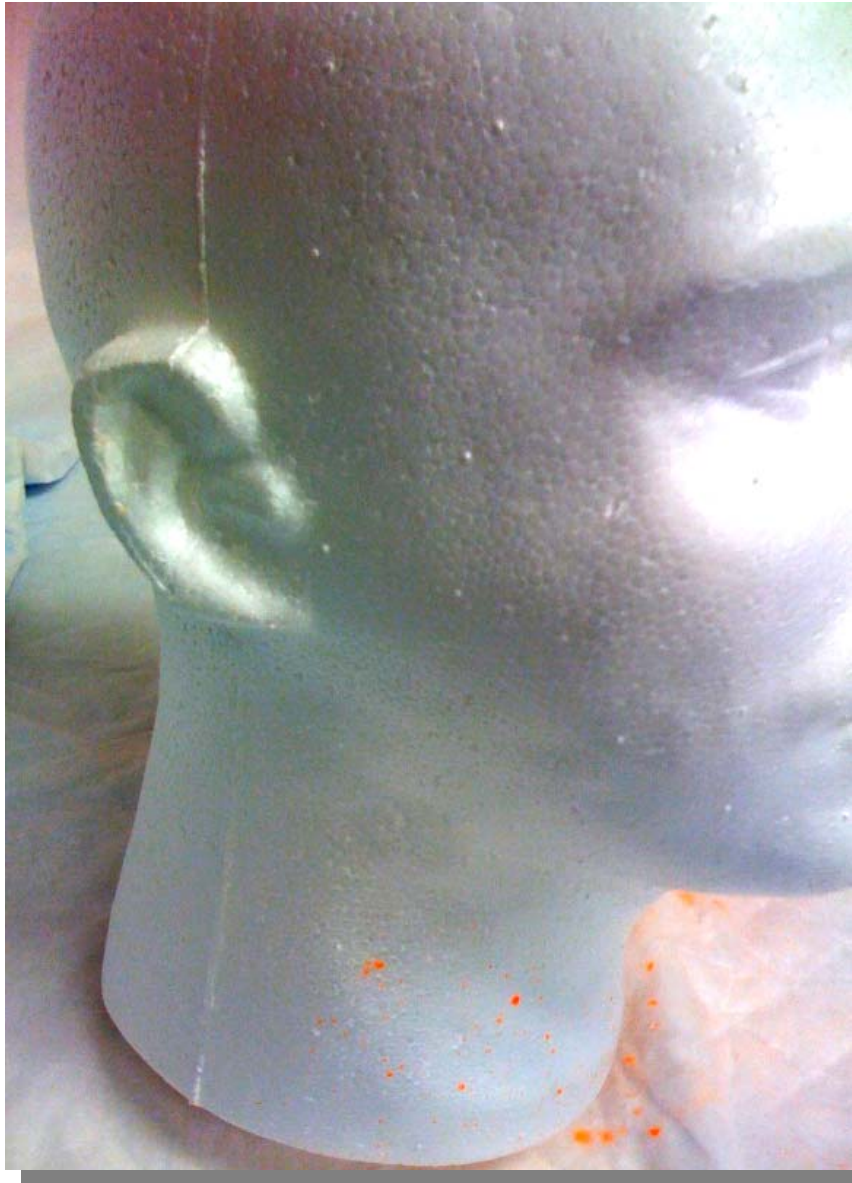
Results (cont)



Test 2:

Integrated visor / surgical mask
(i.e. non-N95)

Results (cont)



Test 2:

Integrated visor / surgical mask
(i.e. non-N95)

Results (cont)



Test 3:

Kimberly Clark Safeview worn
in conjunction with 3M 1870

(i.e. frequently a standard
operating procedure where
N95 masks are required).



Test 3:

Kimberly Clark Safeview worn in conjunction with 3M 1870

Mannequin head (Eye Shields + N95) sprayed with “glo-germ” type ink, simulating a patient event such as sneeze, cough or spray.



Test 3:

Kimberly Clark Safeview worn in conjunction with 3M 1870

Results



Test 3:

Kimberly Clark Safeview worn in conjunction with 3M 1870

Results (cont)



Test 3:

Kimberly Clark Safeview worn in
conjunction with 3M 1870

Results (cont)